



Propeller and Sail

Ketchikan Yacht Club Newsletter

January 2004

Cruising Communiqués

Subject: CRUISING THE WEST COAST OF BARANOF ISLAND

By Sam Barnard *MV Princess*

Current Soundings

CONGRATULATIONS TO THE NEW KYC OFFICERS

Commodore – George Porter
Vice Commodore – Kris Jensen
Rear Commodore – Judith Anglin
Sec/Treas – Deb Davis

Trustees: Fred Rhodes
John Clifton

KYC sailors, this pristine and little explored area of Southeast Alaska beckons to be explored. Marvol and I have made this trip both directions many times and always find it as enchanting and wild as ever.

One can either begin at the southern end, or you can come south from Sitka on Baranof's northern end. The community of Port Alexander makes a great jump off point when beginning from the south. This community has a small store for supplies, along with fuel and water. It's protected harbor and friendly (mellow) citizens make it a good place to stop.

The fishing is great right out front of the town and usually the lee shore (east side) of Baranof offers protected and calm water all the way south in Chatham Strait until you reach Cape Ommaney.

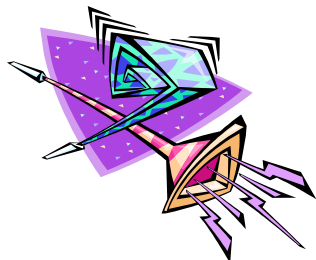
Once you round the Cape, there is nothing standing between you and Japan. The scenery along this shoreline is why you are there and will make up for most of the poor water conditions out there (but not all!!).

(Continued Page 2)



**Happy
NEW
YEAR
To All**

***The Next KYC Meeting
February 3, 2004
Potluck at 6 pm
Meeting at 7:30 p.m.***





Commodore
S

By George Porter

Answers to Last Nautical Trivia:

Jamie Green, a sail used on clipper ships, set beneath the bowsprit and jib boom. It was used mainly when sailing to windward.

The KYC had a great year under Commodore Al Rockwood's command and it was a pleasure being his Vice. I look forward to continuing Al's good work, and hope this year's racing, cruising and stinkpotting will be as much fun as last year.

My goal for this year is to continue upgrading the Club House; new roof, new carpet and address the pump-out facility. I think the galley is also in need of some work.

I would like to encourage all members to take advantage of the free use of the pressure cleaner from now to the end of March to get our fleet de-mossed and de-slimed otherwise De Commodore's coming.

We have just a few months to get ready for summer cleaning, repairing and checking all our navigation equipment. Swinging ship, new first aid kit and much more.

All members are reminded of the amendments to the international regulations for the preventing of collisions at sea. This can be found in USCG Local Notice to Mariners #45.

Nautical trivia for the weather experts:

What is an Isotach?

- a. Line connecting equal rainfall.
- b. Line connecting equal wind speed.
- c. Line connecting equal cloud cover.

Good Sailing
GP

Cruising Communiqués

(cont from Page 1)

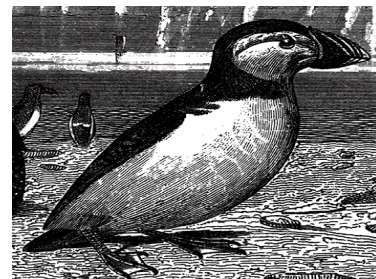
Puffins and whales are in abundance and you will find several bays that offer great, safe anchorages along this coast line.

Beginning with Little Puffin, (try fishing for Dolly Varden in the mouth of the stream and put a halibut line over at anchor), Redfish Bay (a sockeye run occurs in the back of the bay), Sandy (great halibut fishing in the entrance), Whale Bay (a fantastic salmon stream is located in Port Banks), Still Harbor (pristine and calm anchorage--our favorite on the outer coast), Yamani (views of the open ocean from your anchorage) and Necker Bay (another sockeye run here).

From this point north you can enter into channels and fjords that will keep you on the inside and in protected waters all the way to Sitka, with many fine anchorages to choose from. Don't miss stopping at Goddard Hot Springs for a soak in the tub, as the Russians used to do.




There are few places left in Southeast Alaska that are not crowded with cruising boats in the summer time. You won't find any cruise ships here and no one takes American Express.

P.S. Don't tell anyone about this.





Yes, summer is just around the corner and racing season!

January 2004						
Monday	Tuesday	Wednesday	Thursday	Friday	Saturday	Sunday
			1 New Year's Day 	2	3	4
5	6 KYC Meeting Potluck at 1800 and meeting at 1930	7	8	9	10	11 Forrester Is Hazy Is. Wildlife Refuges 1912
12	13	14	15	16	17	18
19 Martin Luther King Jr. Day 	20 KYC Trustees' 1900	21	22 Chinese New Year 	23	24	25
26	27	28	29	30	31	

Upcoming Activities and TO DOS:

- Please close the windows and lock the doors after use of the Clubhouse.

Dock Lines

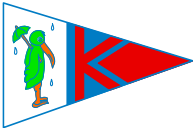
- WATCH OUT for the slippery areas on the dock!

Web Site

- Don't forget to keep checking out our website at www.ketchikanyachtclub.org



KYC's next Meeting February 3, 2004



Ketchikan Yacht Club
PO Box 6694
Ketchikan, AK 99901

Founded 1933